

SB 107: Creating a STEM Innovation Network for New Mexico

Creating a **STEM Innovation Network** drives New Mexico's **Economic Development Plan** forward by pulling together cross-sector leaders in **education, out-of-school programs, business, and local communities** to build the systems and opportunities learners need to be prepared for the vital, high-demand STEM careers of the future.



Why SB 107?

Senate Bill 107 creates the STEM Innovation Network New Mexico to meet NM's STEM Education, Workforce and Economic needs.



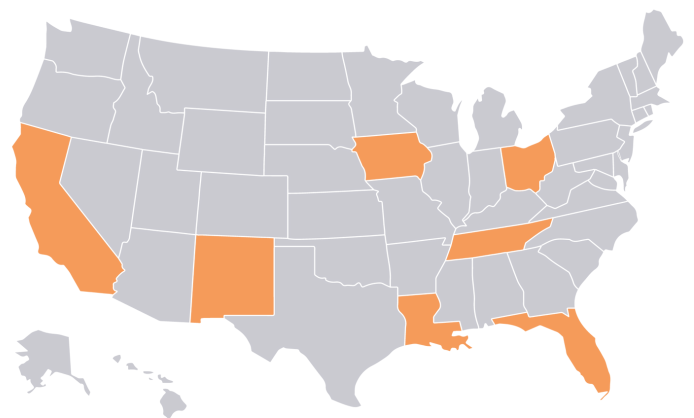
- New Mexico has a **booming tech sector**, including two national laboratories, Intel Corporation, Meta, Spaceport America, and other tech companies choosing to establish headquarters in New Mexico.
- New Mexico colleges and universities produce about **2,600 STEM graduates** per year. However, at any given time, the state has approximately **4,600 open STEM positions**, highlighting a workforce gap.
- The average pay rate for STEM jobs in New Mexico is **\$108,000**, which is competitive with the national average.
- In comparison, the average wage for non-STEM jobs in New Mexico is **\$53,000**.
- STEM jobs are available at **all levels of education**, from undergraduate certificates to advanced degrees.



New Mexico's STEM Innovation Network will build the **connective tissue** between **pre-K-12 education, out-of-school programs, and workforce development** to meet our state's 21st Century economic needs

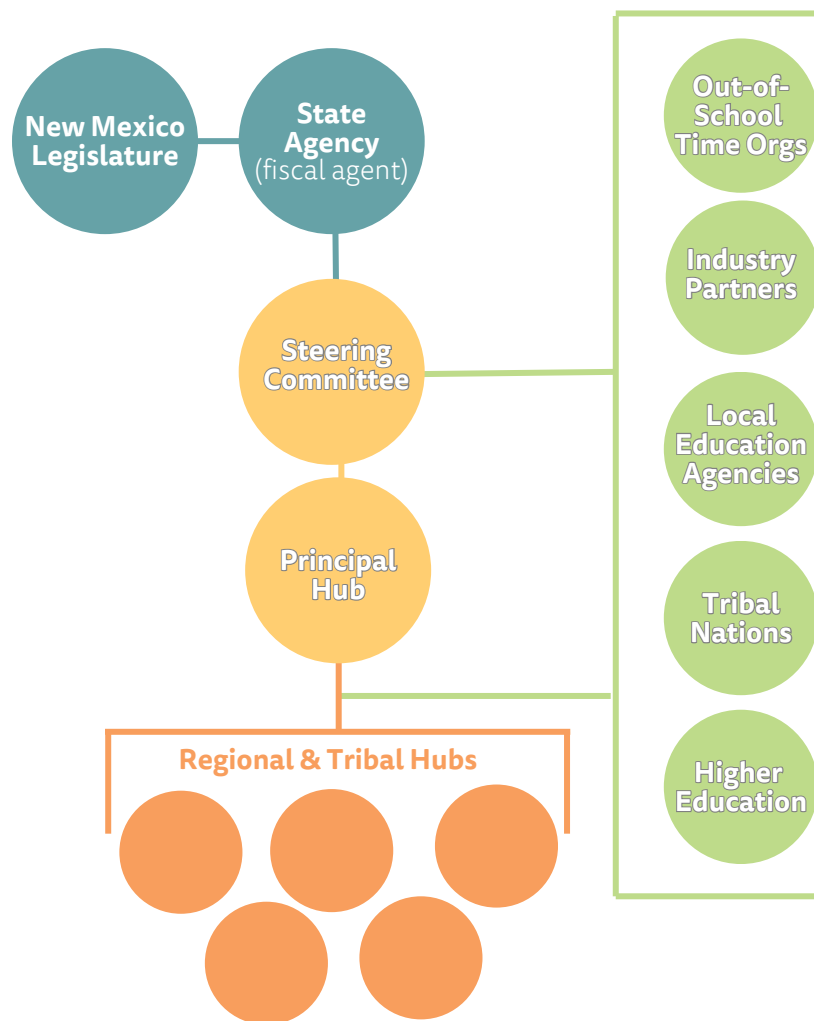
Provisions of the Bill

- Creates a **principal hub** at a Center of Excellence at New Mexico State University (NMSU).
- Creates a cross-sector **steering committee**.
- Creates **Regional** and **Tribal Hubs**.
- Requests **\$6 million** over three years.



SB 107 will help New Mexico join a cadre of other states with established STEM Innovation Networks, including **California, Florida, Iowa, Louisiana, Ohio, and Tennessee**,

How it Works



- STEM Networks connect state resources to foster innovation in schools, including **CTE programs, out-of-school programs**, and **higher education** to meet regional economic needs.
- STEM Networks support schools, out of school programs, higher education, industry, government and communities to coordinate and **create innovative programs** that **align with regional and state industry needs**.
- STEM Networks build **community awareness** and drive **education and industry partnerships**.
- A STEM Network in New Mexico will help ensure students have access to **inquiry learning** every day, regular access to **out-of-school STEM learning**, as well as access to **STEM career pathways exploration** and **mentorships** so learners are prepared for STEM careers and being STEM-savvy citizens.

Dr. Gwen Perea Warniment
President/CEO
gwen@lanlfoundation.org

Alvin Warren
Vice President of
Policy & Impact
alvin@lanlfoundation.org