

ENGAGING EARLY CHILDHOOD PARTNERS IN TRIBAL COMMUNITIES THROUGH AUTHENTIC STORYTELLING

PURPOSE

The Los Alamos National Laboratory (LANL) Foundation, in partnership with the Eight Northern Indian Pueblos Council, Inc. (ENIPC) used oral and graphic storytelling as a primary source of information in:

- **MAPPING** the pueblos of Nambe, Ohkay, Picuris, Pojoaque, San Ildefonso, Santa Clara, Tesuque and Taos to identify assets, gaps, overlaps, and capacity in providing services (such as home visiting) to children (0-5) and their families.
- Identifying **FAMILY SYSTEMS AND RESOURCES** available to families.
- Gathering information about **EARLY CHILDHOOD EDUCATION** needs.
- Building a **UNIQUE EARLY CHILDHOOD PLAN** for each pueblo including a Vision, Mission, Purpose, Strategies, Outcomes and Impact.
- Allowing for individual and **COLLECTIVE REFLECTION**.

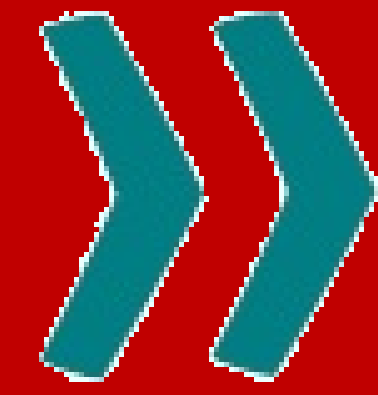
The Pueblo Outreach Project sought to understand the landscape of early childhood services in the tribal areas of northern New Mexico. The Project focused on strengthening relationships and communication utilizing best practices to ensure each Pueblo was equipped with the best resources and programming to meet the community's early childhood needs.

STORYTELLING IN TRIBAL COMMUNITIES

- Is an art that **BUILDS COMMUNITY**.
- Is a medium for **COLLECTIVE LEARNING**.
- Promotes **AUTHENTIC UNDERSTANDING** of where they are, where they have been and where they are going.
- **CREATES OPPORTUNITIES** for relationship-building, partnerships, collaboration and advocacy.
- Works to engage communities in **SUSTAINABILITY**.
- Can serve as a tool for **HEALING**.
- Allows the listeners to **HEAR DIFFERENT POINTS OF VIEW**.
- Builds capacity by giving members a place to share voice and leads to **STRONGER COMMUNITY-DRIVEN VOICE**
- Helps address and leads to **HEALING OF HISTORICAL TRAUMA**

LESSONS LEARNED

- Honor people's stories.
- Listen with respect.
- Do not tell or share another person's story without permission.
- Recognize the expertise in communities by valuing knowledge.
- Each pueblo is unique in language, governance and geography.



METHODS

Understanding that all relationships take time to develop, it was important that partnerships progress to trusting relationships. The Pueblo Outreach Project belonged to each Pueblo - it was through the guidance and support from the LANL Foundation's Early Childhood team that each Early Childhood Plan was developed through these:

METHODS

- **RESOLUTION** by the ENIPC was passed and supported to begin work on the project.
- Individual **PERMISSION** from each tribal leader was received to work with staff and develop plans.
- An **ADVISORY COMMITTEE** was formed with key individuals from each Pueblo to guide the process.
- Individuals developed **PLANNING TEAMS** to begin mapping early childhood services.

AUTHENTIC STORIES were gathered through a series of questions:

- What is working in your community?
- What is not working in your community?
- Ideally, what would you want for your community?

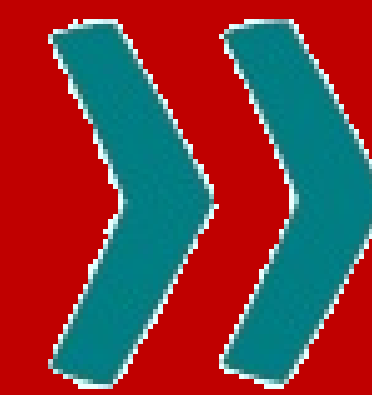
DRIVING QUESTIONS gathered a bigger picture and future vision of early childhood within each Pueblo. **What does an early childhood structure look like?**

- How will leadership be involved?
- What community programs will be involved?
- What impact will this have for the families?
- What is the most important accomplishment of the project?

The final result was an actionable **LOGIC MODEL** that strategically presents: **GOALS RESOURCES ACTIVITIES OUTPUTS OUTCOMES IMPACT**

DEMOGRAPHICS were collected to show **HEALTH OUTCOMES** as they currently stand surrounding the tribal communities.

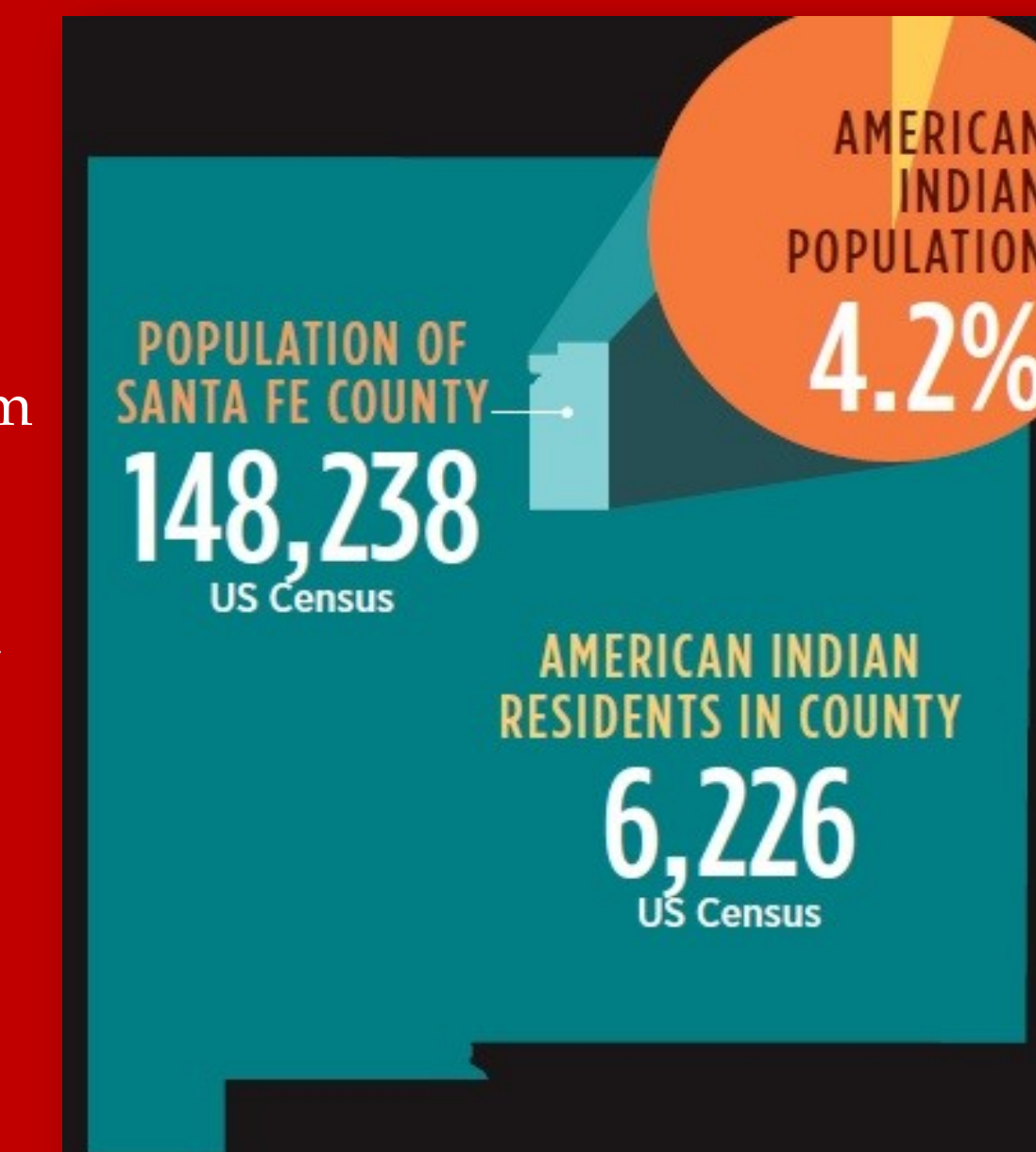
Lastly, a creative activity was done with each team to bring a vision to what a **THRIVING CHILD** looks like.



RESULTS

Stories are woven webs that connect people to the past, present and future. Stories represent a community's power demonstrating not only history but resilience of native people through the voices of storytelling. The results and understanding that were gained through the Pueblo Outreach Project initiative came through the Pueblos and their stories. What the LANL Foundation team learned was:

- **ENGAGEMENT** and the ability to actively listen.
- **CAPACITY** was strengthened through diverse stakeholders from the Pueblos.
- Focusing on **RELATIONSHIPS** allowed for engagement and authentic storytelling. communities shared strengths, ideas, issues and visions.
- **EDUCATION** at all levels was an important part of the process.
- **EARLY CHILDHOOD EDUCATION** has become a priority for the Pueblos.
- Eight **ACTIONABLE** Early Childhood Plans were created within an 18 month span of time.
- Early childhood **COLLABORATIVES** will continue to meet beyond the 18 months to begin **IMPLEMENTATION** of their plans.

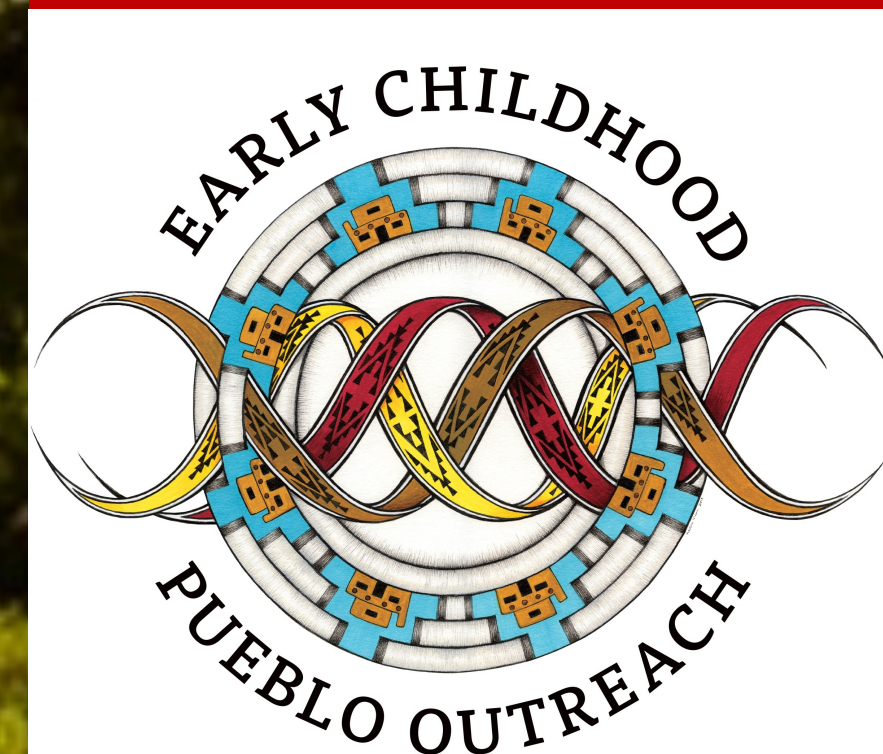


IMPACT

Did we accomplish what was planned, and what was the impact? As a result of the project, the full impacts have yet to be recognized. The short-term impacts include:

- **LEVERAGING** of partners to collectively look at issues.
- **RELATIONSHIPS** continue to develop and form.
- **CAPACITY** to solve problems collectively with trust and respect recognized by partners.
- **UNDERSTANDING** the importance of Home Visiting Programs and future impacts it can accomplish within Pueblo communities.
- **REALIZATION** of Adverse Childhood Experiences (ACE's) and the effects that it has on parents and children.
- **COMMUNITIES** ready to break the cycles and willing to work to get education to their families.

The future of any community depends on their children's well-being. Future impacts will be a result of continued partnerships and family education.



LANL FOUNDATION
Investing in Learning & Human Potential

