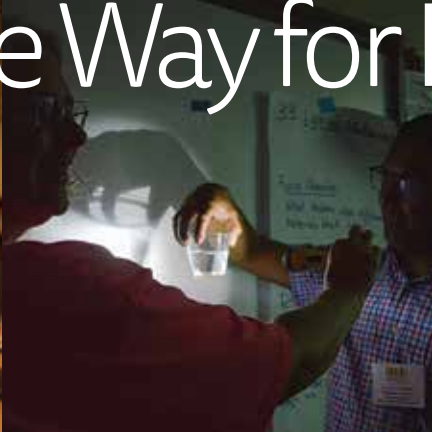




Paving the Way for Equity in Education



 **LANL 20 YEARS
FOUNDATION**
*Investing in Learning
& Human Potential*

2016-2017
Annual Report



Early
Childhood

Inquiry STEM
&
K-12 Programs

Scholarships

Education &
Community
Grants

For 20 years, the LANL Foundation has been investing in learning and human potential.

As the only nonprofit solely dedicated to education in Northern New Mexico, our innovative programs, community collaborations, and advocacy support our vision that all New Mexicans have the skills and confidence they need to be self-sufficient, lifelong learners who are engaged in their community.

In celebrating this milestone, we reflect upon our past work to pave the way for equity in education throughout Northern New Mexico. Our focus began with educational funding through grants and scholarships but has now evolved to include program development and management. This strategic shift and growth are guided by our steadfast look toward achieving positive outcomes for children, teachers, and families.

The early challenges for the LANL Foundation were both daunting and exhilarating. In the first year of operation, Founding Director Susan Herrera had to hire staff, set up offices, establish a nonprofit business plan consistent with best practices, and figure out how to grant an annual \$3 million gift from the University of California to public schools and nonprofits in a fair and equitable manner. Furthermore, the Foundation kept its eye on the future and worked with the New Mexico Congressional Delegation to help appropriate an endowment of \$35 million authorized by Congress over a five-year period.

While the original endowment has more than doubled, we have invested \$70 million in education programs and support in these last two decades. The LANL Foundation's work has expanded to include a focus on early childhood education and home visiting; an inquiry STEM program that brings hands-on learning materials, curriculum, and teacher professional development to elementary schools; K-12 programming to support the social and emotional needs of our children and teachers, cultivation and advocacy for teacher leadership, and enhanced STEM learning opportunities; and a more robust college scholarship program.

Northern New Mexico is a place with deep roots in history, shared knowledge, partnership, and innovative science. We recognize and revere our community strengths. The spirit of collaboration and our core values—equal opportunity for all children, openness, diversity, partnership, accountability, and integrity—have fueled our work for two decades and continue to do so.

We are committed to Northern New Mexico and to work in partnership with local communities to build the best and brightest future possible for all our children and their families. We hope you will partner with us!

Nan Sauer, *President of the Board of Directors*

Jenny Parks, *LANL Foundation CEO*

Partnership

Board
& Staff

Financials

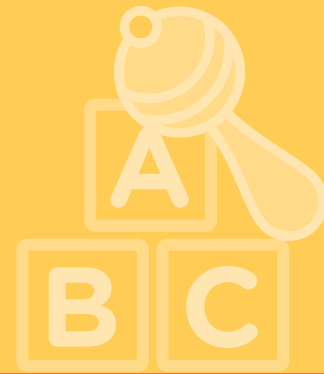
Early Childhood

The first 3 years of life

are the most important in a child's physical, social, and emotional development.

Early childhood education, developmental understanding, and supportive resources for parents and communities are critical to improve child well-being and set a positive course for school readiness and lifelong learning.

» [More information: lanlfoundation.org/earlychildhood](http://lanlfoundation.org/earlychildhood)



Home visiting

is a free, voluntary early childhood support model offering building blocks for parents—emotional support, collaborative training on parenting practices, and connection with resources—that improve health, developmental, and emotional outcomes of children.



Families in 18 New Mexico counties

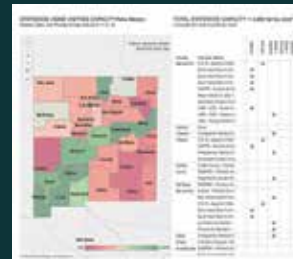
through 14 First Born® offices are offered free home visiting, due in part to LANL Foundation's past leadership in program expansion. 2016–2017 program managers' meetings built infrastructure, defined gaps in service and training, aligned data reporting, and encouraged shared knowledge for continuous improvement.

Thousands of families receive vital services

due to collaborative advocacy for a statewide home visiting system across several program models.

Home visiting capacity map was developed by the NM Home Visitation Collaborative, a LANL Foundation initiative, and highlights home visitation providers by county, funding resources, space availability, and needs met. This interactive, online tool, updated twice a year, was created by the University of New Mexico's Center for Education Policy Research in partnership with NM Children, Youth & Families Department and other home visitation programs.

» lanlfoundation.org/home-visiting



Strategic partnership

with the NM Early Childhood Funders Group advocates for increased home visiting funding statewide. The NM Home Visiting Collaborative facilitates a forum for communication, aligning home visiting services, and learning opportunities.



Pueblo Outreach Project, guided by LANL Foundation staff and in partnership with Eight Northern Indian Pueblos Council, is completing an Asset Map for each of the eight northern Pueblos. From this information, a culturally relevant plan will be developed that each community can use to increase awareness, build capacity, better utilize existing services or develop new family support systems in early childhood health and wellbeing.

\$1,066,240 grant from the W.K. Kellogg Foundation is funding the LANL Foundation's Pueblo Outreach Project into early 2020. Funding partners also include the Brindle Foundation, Daniels Fund, and Delle Foundation.

\$6.45 million

has been invested and leveraged by LANL Foundation for early childhood home visiting since 2006.

Inquiry STEM

Innovative inquiry learning matched with classroom supports engages students, spans learning styles, builds interest in careers viable to the region, and fosters professional growth for teachers.

» **More information:** lanlfoundation.org/ISEC



Inquiry learning

curriculum and materials engage students in collaborative investigations to design solutions to complex problems, collect data, understand systems, draw models, and identify evidence to support claims. Improved critical thinking, communication, collaboration, and creativity result.

The Inquiry Science Education Consortium

(ISEC) works to increase equity and access to quality education in areas of science, technology, engineering, and math (STEM) and helps close the achievement gap for Northern New Mexico students in grades K–6.

STEM careers are the largest growing job opportunities we see today.



Learning crosses grade levels & subjects

including reading, mathematics, and social studies through the process of documentation, data collection, analysis, discussion, and applied knowledge that occurs during hands-on and minds-on explorations using STEM content relevant to daily life.



11,000+ students & 570 teachers in 44 elementary schools across 8 districts & 2 pueblos

in Northern New Mexico receive the ISEC program free of charge.



400+ hours of direct instruction for ISEC teachers were provided by our Professional Development team through intensive summer training, ongoing classroom support, and individual coaching during the 2016–2017 school year.

45 master teachers were selected to be part of a Teacher Leader Cadre (TLC) that receives advanced professional development, serves as trainers during the Teachers' Institute, and offers ongoing support to colleagues.

Next Generation Science Standards

were incorporated into ISEC in 2016 when new materials and curriculum were purchased to align with the more-rigorous STEM focus and practices, in addition to already meeting the NM standards in science, marking an investment of

\$1 million in NGSS

850,000 materials are ordered, managed, and refurbished by the LANL Foundation Science Resource Center (SRC).

4,564 miles were traveled by SRC staff for curriculum module drop-offs and pickups at schools during the 2016–2017 school year.



\$15.5 million

has been invested in ISEC by the LANL Foundation over the last seven years.

K-12 Programs

An inclusive plan, strategies, and funding across the learning spectrum are needed to cultivate promising programs and understand, advocate for, and act upon effective, accountable change in education.

» **More information:** lanl.foundation.org/k12

Advocacy

in education affects policy, builds alliances, and creates opportunities to share knowledge across programs in and out of New Mexico.

\$133,714

was invested in 2017 for new K-12 Programs in the first year of LANL Foundation's broader educational funding initiative. ISEC continues as the flagship program.



```
<!DOCTYPE html>
<html>
<head>
  <title>STEM Careers</title>
</head>
<body>
  <h1>Computer Programmer</h1>
</body>
```

Socio-emotional support & talent development

for teachers and students that honors multicultural and multilingual diversity, create positive, safe learning environments and improve achievement in school, career, and life.

12 Española student programmers

were trained in an 8-week summer web development bootcamp, led by Cultivating Coders of Albuquerque working in rural areas to build interest and opportunity in tech careers.

5 developer catalyst programs

were also brought to local high schools to teach web development.



Communities in Schools New Mexico

with partial support from LANL Foundation helped to address academic and non-academic needs of more than 5,000 students by engaging local businesses, social service agencies, health care providers, and volunteers.



Teacher development & leadership support

can address teacher shortages, high dissatisfaction and turnover, and lack of professional development, which compound frustrations and disrupt students' education.

Rio Arriba Excellence in Teaching Award,

in partnership with Centerra-Los Alamos, honored 7 teachers with \$1,000 to bring encouragement and support the education profession.

10 Española teachers are pursuing National Board Professional Teaching Standards Certification with LANL Foundation funding.

24 counselors were trained in academic coaching by LifeBound Inc. of Denver to help students develop the academic, practical, and professional skills they need to succeed.

360 students at El Camino Real Academy were introduced to MidSchool Math, a creative, comprehensive curriculum that was purchased for three years with support from the LANL Foundation.

Math Circles Collaborative provided teacher-led professional development in collaboration with the Española Tech Hub working to build college preparedness by increasing mathematics knowledge through tutoring, project-based learning, and applications.

Native American Leadership in Education

at the University of New Mexico provides an avenue for local tribal and Native American educators to pursue doctorate degrees.

Community Voices in Education

student video project with Learning Alliance New Mexico and Littlelobe gained a deeper understanding of local education by engaging Española and Ojo Caliente high school students, teachers, and community members in discussion about success, challenge, and opportunity for student support.



Scholarships

Access and affordability of higher learning—professional training, certifications, 2-year and 4-year college degrees—are essential to building a local workforce that meets the needs of individuals, families, employers, and the economy.

» **Criteria, application, recipients:** lanlfoundation.org/scholarships

Los Alamos Employees' Scholarship Fund

was created by Los Alamos National Laboratory employees who know the value of supporting higher education for their neighbors. LANL Foundation manages the funds and oversees the program with a 25-member advisory committee of donors.



1300+ students

from Northern New Mexico have benefited from scholarships ranging from \$1,000 to \$20,000. Some receive multiple awards.

20 award levels

highlight diverse qualifications like STEM degrees, education professions, first-generation college students, outstanding leadership, resiliency and determination, and financial need.

\$6.1 million in scholarships

has been awarded to local students in any field of study since 1999 to help offset rising college costs and offer an emotional boost to students and incentive to strive for educational excellence.



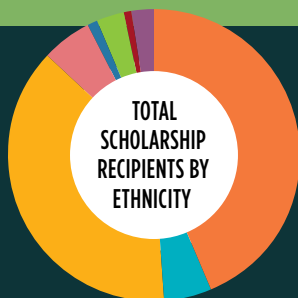
\$4.5 million

in scholarship donations has been made by the LANL workforce, as well as donors and businesses from the surrounding community.

Donations from LANS, including an annual \$250,000 employee match, total **\$3.2 million.**

Internships

at LANL under guidance of a mentor are available to many scholars.

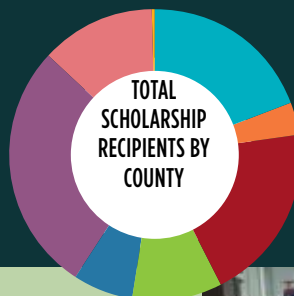


- Hispanic, Latino **43.8%**
- American Indian, Alaska Native **5.3%**
- Caucasian **38.0%**
- Asian American, Pacific Islander **5.6%**
- Black, African American **1.1%**
- Mixed-Race **2.9%**
- Other **0.9%**
- Did Not State **2.4%**

68% of our scholars are female, **32%** are male.
92% have graduated or are currently in college.
70% pursue STEM careers.

134 scholarships worth \$599,750 were awarded in 2016.

153 scholarships worth \$695,250 were awarded in 2017.



- A Los Alamos \$1,184,000**
- B Mora \$138,250**
- C Rio Arriba \$1,112,172**
- D San Miguel \$591,750**
- E Sandoval \$305,500**
- F Santa Fe \$1,853,506**
- G Taos \$948,500**
- H Did Not State \$5,000**



Nontraditional students

seeking new job opportunities with a 2-year degree or certification are offered Regional College/Returning Student scholarships.

Tribal Business Scholarships

support Native American students pursuing business-related degrees.



Donor generosity has made possible these recent opportunities.

Bronze award increased from \$4,000 to **\$5,000 over four years**

\$150,000 total increase in scholarship awards

more scholarships are now awarded each year

» lanlfoundation.org/give



Grantmaking

Supplemental support for local school districts, nonprofits, Pueblos/Tribes, and community projects helps to fill gaps in education funding and address public needs that encourage lifelong learning.

» **Criteria, application, recipients:** lanlfoundation.org/grants



\$47.5 million in 4,600 grants has been invested in Northern New Mexico by the LANL Foundation since 1998.

74 small education & community grants totaling \$150,000 were awarded in 2016.

71 small education & community grants totaling \$196,143 were awarded in 2017.

Education Grants

support public K-12 needs such as curriculum, literacy, STEM, experiential learning, dropout prevention, and teacher professional development.

Community Grants

are not required to solely support K-12 public education. Early childhood, adult learning, and community events are a few focus areas in this category.



Santa Fe Public Schools

used grant funding for Hands-On Heritage—Exploring New Mexico's Environments and Cultures, providing books and summer field trips for 160 students in grades 4-8 from two schools.



Moving Arts Española

provides programming and learning opportunities in performing and visual arts, nutrition, after-school tutoring, and mentorship.

\$2,500 small grants

are available to qualified school districts, nonprofit educational institutions, 501(c)(3) nonprofits, government agencies, and Pueblo/Tribal communities that serve our 7-county service area.

Some promising programs are supported by larger or multi-year funding by invitation.



Twirl Play & Discovery Space

in Taos hosted the Invent Event to inspire early interest in science, technology and making through hands-on activities that connect students and parents with local nonprofits, businesses and school programs.

Responding to programmatic needs, small education & community grant funding increased.

Maximum small grant amount grew from **\$1,500 to \$2,500**

Donors & Partners

Equity in education and programs that serve children, families, educators, and our community are only as strong as the partnerships that drive and support them. We thank all of our valued donors and partners, past and present.

» lanlfoundation.org/partners

A committee of representatives of the Pueblos with key members from the surrounding community offers culturally respectful and strategic guidance and support to the Early Childhood Pueblo Outreach Project.

- » **Gil Vigil**, Advisory Committee Chair, Executive Director of Eight Northern Indian Pueblos Council, councilman & former Governor of Tesuque Pueblo
- » **Jovanna Archuleta**, LANL Foundation Pueblo Outreach Coordinator
- » **Joseph Chavarria**, Santa Clara Pueblo Tribal Administrator
- » **Beverly Fierro**, Pojoaque Pueblo Early Childhood Center Director
- » **Anna Marie Garcia**, LANL Foundation Early Childhood Program Director
- » **Joline Martinez**, Ohkay Owingeh Head Start Director
- » **RJ Martinez**, LANL Foundation Early Childhood Program Associate
- » **Ron Martinez**, Senior Associate for the Center for the Education and Study of Diverse Populations at New Mexico Highlands University, Director of ENLACE New Mexico
- » **Mark Mitchell**, Governor of Tesuque Pueblo
- » **Jenny Parks**, LANL Foundation CEO
- » **Elmer Torres**, former San Ildefonso Pueblo Governor Tribal Council member, former Tribal Liaison Director at Los Alamos National Laboratory's Government Relations Office, current business owner and LANL Foundation board member
- » **Monica Vigil**, Community Health Representative, Nambé Pueblo
- » **April Winters**, Tiwa Babies Home Visitor, Taos Pueblo member

ISEC schools, teachers, and administrators have committed to systemic change and invested time and resources into the inquiry STEM program.

Chama Valley Independent School District

- » Chama Elementary School
- » Tierra Amarilla Elementary School

Dulce Independent School District

- » Dulce Elementary School

Española Public School District

- » Abiquiu Elementary School
- » Alcalde Elementary School
- » Chimayó Elementary School
- » Dixon Elementary School
- » Eutimio Tim Salazar/Fairview Elementary School
- » Hernandez Elementary School
- » James H Rodriguez Elementary School
- » Los Niños Kindergarten Center
- » San Juan Elementary School
- » Tony E. Quintana Elementary School
- » Velarde Elementary School

Jemez Pueblo

- » Jemez Day School

Jemez Mountain School District

- » Gallina Elementary School
- » Lybrook Elementary School

Mesa Vista Consolidated School District

- » El Rito Elementary School
- » Ojo Caliente Elementary School

Peñasco Independent School District

- » Peñasco Elementary School

Pojoaque Valley Public School District

- » Pablo Roybal Elementary School
- » Pojoaque Intermediate School
- » Pojoaque 6th Grade Academy

Santa Clara Pueblo

- » Kha'p'o Community School

Santa Fe Public School District

- » Acequia Madre Elementary School
- » Amy Biehl Community School
- » Aspen Elementary School
- » Atalaya Elementary School
- » Carlos Gilbert Elementary School
- » César Chávez Elementary School
- » Chaparral Elementary School
- » EJ Martinez Elementary School
- » El Camino Real Academy
- » El Dorado Community School
- » Gonzales Elementary School
- » Kearny Elementary School
- » Nava Elementary School
- » Nina Otero Elementary School
- » Piñon Elementary School
- » Ramirez Thomas Elementary School
- » Salazar Elementary School
- » Tesuque Elementary School
- » Sweeney Elementary School
- » Wood Gormley Elementary School

If you share our deep connection to Northern New Mexico and our desire to change the course of education,

**make a donation
to support our programs
or join our
Legacy Society.**

» lanlfoundation.org/give



LOS ALAMOS
National Security, LLC

Los Alamos National Laboratory, LANS, LLC, and the LANL Foundation have a shared vision to empower individuals to reach their full potential.

\$6.8 million

has been invested by LANS in support of our education programs.

The Scholarship Fund is governed by an Advisory Committee composed of donors who are Laboratory and contract employees and retirees, selected by other donors.

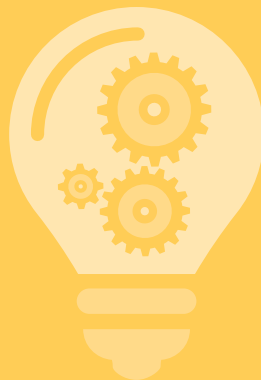
- » **Tony Fox**, Vice President of Institutional Advancement & Scholarships
- » **John McDermon**, Program Manager
- » **Joanna Gillespie**, Community Partnerships Office Liaison
- » **Audrey Archuleta**
- » **Eva Baca**
- » **David Bowman**
- » **Julie Bremser**
- » **Cassandra Casperson**
- » **Lynne Clarkson**
- » **Norman Delamater**
- » **Paul Dunn**
- » **Crystal Espinoza**
- » **Robin Franke**
- » **Steve Glick**
- » **Felice Gurule**
- » **Prabhu Khalsa**
- » **Leon Lopez**, Immediate Past Chair
- » **Wendy Marcus**
- » **Rebecca Martinez**
- » **Ted Martinez**
- » **Stephanie McReynolds**
- » **Frederic Montoya**
- » **Evelyn Mullen**
- » **Andrea Pistone**, Chair-elect
- » **Tania Sanchez**, Chair
- » **Raeanna Sharp-Geiger**
- » **Sadonna Tapia**
- » **Enrique Torres**
- » **Andrew Wolfsberg**

We also thank our 2016 Advisory Committee members for their dedicated service.

Board & Staff

Collaboration, leadership, dedication, and integrity are seen at all levels of LANL Foundation work through our board and staff. We listen and learn, bringing ideas to light, and seeing strategic plans through to execution.

» lanlfoundation.org/about-us



LANL Foundation Board of Directors

Executive Committee

- » **Nan Sauer**, 2016–2017 President
- » **Hervey Juris**, Vice President
- » **Kathryn Harris Tijerina**, Secretary
- » **Willard (Bill) Wadt**, Treasurer
- » **Elmer Torres**, At-Large

Members at Large

- » **Charles McMillan**, Ex Officio
- » **Ambrose Baros**
- » **Billie Blair**
- » **Kim Budil**
- » **Robert Coombe**
- » **Jan Goodwin**
- » **John Gulas**
- » **Barry Herskowitz**
- » **Jeannie Oakes**
- » **James Owen**
- » **Andrea Romero**
- » **Denise Thronas**
- » **Patricia Trujillo**

Honorary Members

- » **Florence Jaramillo**
- » **Diana MacArthur**
- » **Martin Strones**

We thank our former Board members who served in 2016 or 2017:

- » **Jeffrey Howell**
- » **Wayne Kennedy**
- » **Jerry Lopez**
- » **Juniper Lovato**
- » **Rich Marquez**



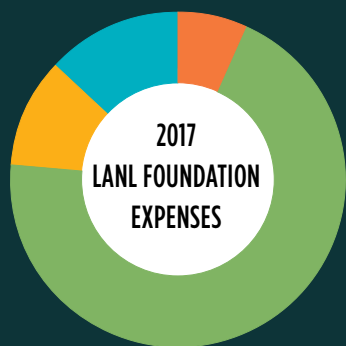
Staff

- » **Jenny Parks**, Chief Executive Officer
- » **Tony Fox**, Vice President of Institutional Advancement & Scholarships
- » **Mihaela Popa-Simil**, Vice President of Finance & Operations
- » **Jovanna Archuleta**, Pueblo Outreach Coordinator
- » **Cindy Atencio**, Bookkeeper
- » **David Call**, ISEC Program Manager
- » **Patsy Chavez**, Receptionist/Secretary
- » **Dave Forester**, ISEC Professional Development Specialist
- » **Anna Marie Garcia**, Early Childhood Program Director
- » **Danielle Gothie**, ISEC Professional Development Coordinator
- » **Monica Herrera**, ISEC Science Resource Center Materials Specialist
- » **Cindy Jimenez**, Building & SRC Housekeeper
- » **Ronnie Jimenez**, Facilities Maintenance Assistant
- » **Evelyn Juarez**, Program Assistant
- » **Bryan Maestas**, ISEC Science Resource Center Coordinator
- » **RJ Martinez**, Early Childhood & Scholarship Program Associate
- » **John McDermon**, Scholarship Program Manager
- » **Susanne Miller**, Executive Assistant & Grants Administrator
- » **Andrea Multari**, Communications Director
- » **Isaac Ortiz**, Science Resource Center Materials Specialist
- » **Doris Rivera**, ISEC Professional Development Specialist
- » **Paul Rivera**, ISEC Science Resource Center Materials Specialist
- » **Patricia Valerio**, Program Assistant
- » **Gwen Perea Warniment**, K-12 Program Director



In 2017, LANL Foundation lost our beloved colleague and friend, Sally Gallegos who served for 12 years as Executive Secretary and Small Grants Coordinator.

2016–2017 Financials



- 1 **\$344,267** Grants
- 2 **\$3,532,489** Programs
- 3 **\$547,167** Scholarships
- 4 **\$648,758** Administration & Fundraising

\$70 million

has been invested by LANL Foundation in districts, schools, nonprofits, and individuals through education programs, grants and scholarships 1997–2017.

Consolidated Statement of Financial Position (unaudited) 2017 and (audited) December 31, 2016

	2017	2016
Assets		
Cash and cash equivalents	\$889,116	\$1,457,316
Investments	84,981,887	75,730,461
Accounts receivable	245,258	191,680
Prepaid expenses	10,955	1,249
Property and equipment, net	1,162,287	1,196,950
Total assets	\$87,289,503	\$78,577,656
Liabilities and Net Assets		
Liabilities:		
Accounts payable and accrued expenses	\$343,014	\$198,593
Grants payable	16,957	14,957
Deferred revenue	25,700	5,766
Note payable	961,372	982,476
Other liabilities	700	3,570
Total liabilities	1,347,743	1,205,362
Net assets	85,941,760	77,372,294
Total liabilities and net assets	\$87,289,503	\$78,577,656

Consolidated Statement of Activities (unaudited) 2017 and (audited) Year Ended December 31, 2016

	2017	2016
Support and Revenue		
Contributions	\$489,052	\$411,860
Grants and contracts	778,729	411,000
Annual educational conference	17,750	-
Investment income	12,329,666	4,312,047
Other income	26,950	211,903
Total support and revenue	13,642,147	5,346,810
Expenses		
Programs:		
Educational enrichment grants	3,683	62,488
Educational outreach grants	125,000	125,000
Community outreach grants	85,553	-
K–12 Programing grants	133,714	-
Scholarships	547,167	465,250
Early Childhood	304,253	273,764
Inquiry Science Education Consortium	1,386,496	2,064,276
Annual educational conference	26,172	-
Other	-	32,000
Program operating expenses	1,811,884	536,864
Total program expenses	4,423,923	3,559,642
General and administrative	502,130	473,571
Fundraising	146,628	107,707
Total expenses	5,072,681	4,140,920
Increase (decrease) in net assets	8,569,466	1,205,890
Net assets at beginning of year	77,372,294	76,166,404
Net assets at end of year	\$85,941,760	\$77,372,294

This is a summary of financial statements. The 2016 audit was performed by Weiner & Co. The 2017 audit will be performed after printing of this report. To view complete audited financial statements and footnotes, visit » www.lanlfoundation.org/documents



www.lanlfoundation.org

LANL Foundation Office:

1112 Plaza del Norte
Española, NM 87532
505-753-8890
info@lanlfoundation.org

ISEC Science Resource Center:

County Road 103, Bldg. 2
Chimayo, NM 87522
505-351-1112
kits@lanlfoundation.org